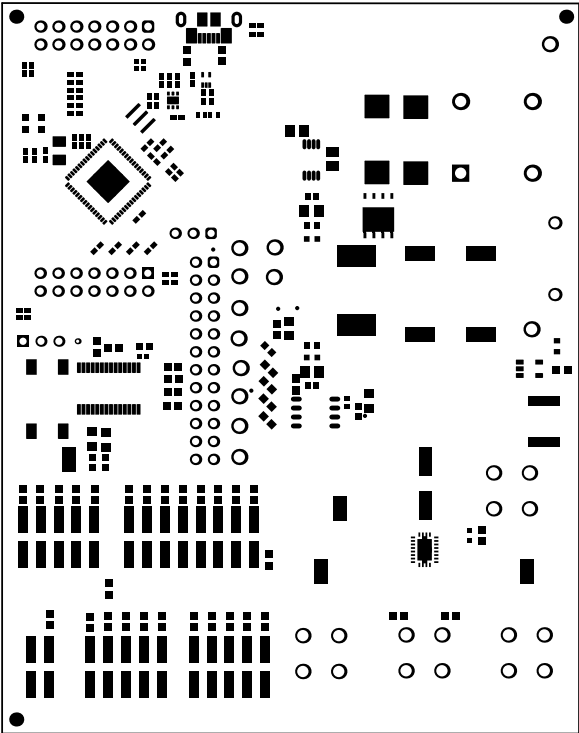
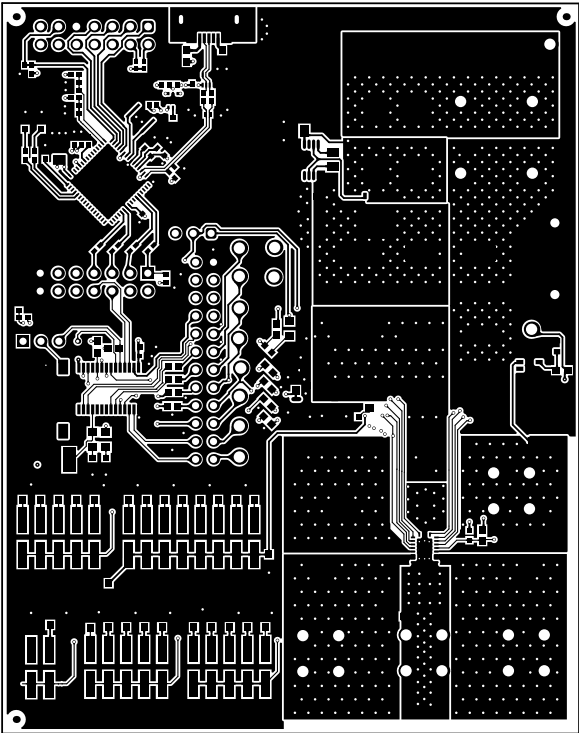


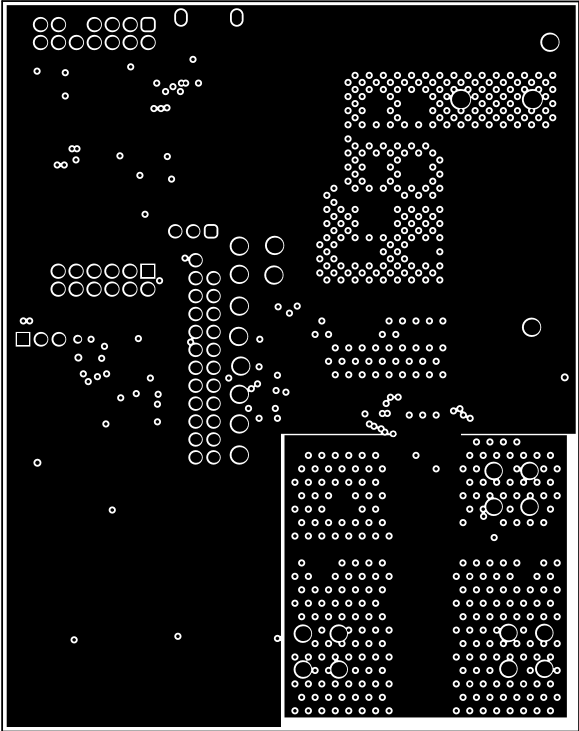
TEXAS INSTRUMENTS



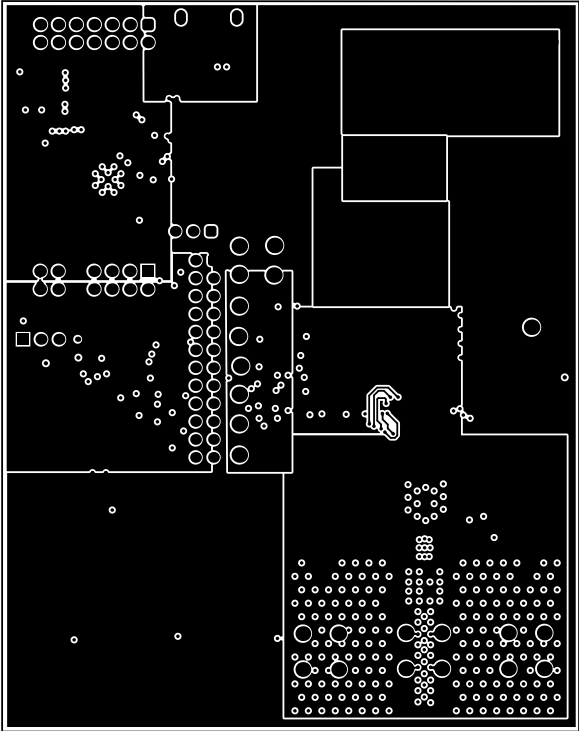
ALL NETWORK VIEWED FROM TOP SIDE	BOMID #1MOD74	REV#A	SUN REV#c31e36d6c7d8a0d4978021e67294b0dc0afe0 (Locally Modified)
LAYER NAME =Top Solder	TID #N/A		
PLOT NAME =Top Solder Mask	GENERATED #11/17/202311:16:28 PM	TEXAS INSTRUMENTS	



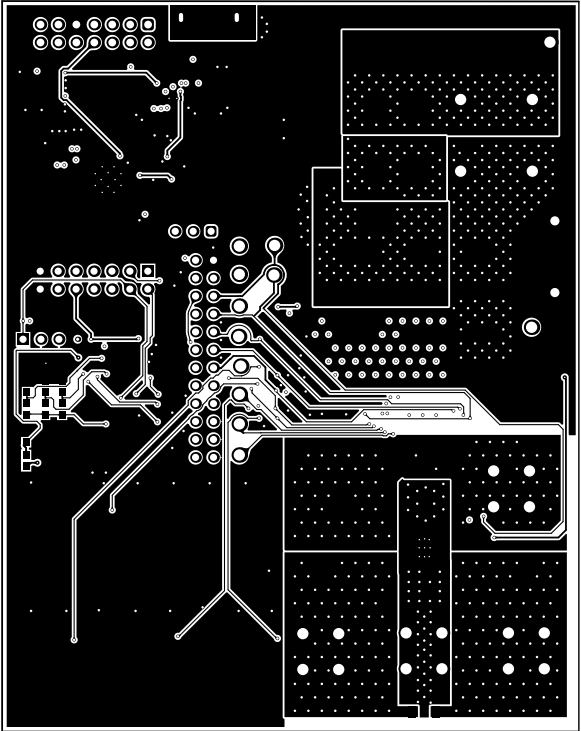
ALL NETWORK VIEWED FROM TOP SIDE	BOARD #:	MOD4	REV:	A	SUN REV:	c3fe36d6c7dba04a97802fe67394bdc0afe0 (Locally Modified)
LAYER NAME = Top Layer	TID #:	N/A				
PLOT NAME = Top Layer	GENERATED:	11/17/2023	11:46:29 PM	TEXAS INSTRUMENTS		



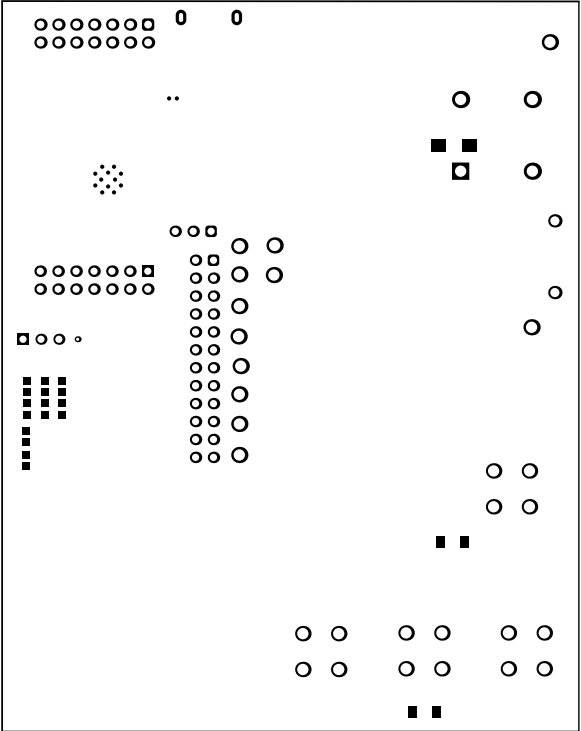
ALL NETWORK VIEWED FROM TOP SIDE	BOARD #1MOD74	REV#A	SUN REV#c31e36ddc7dbad6e978021e67394b0dc0afe0 (Locally Modified)
LAYER NAME =	TID #N/A		
PLOT NAME =Signal 1	GENERATED #11/17/2023	11:46:29 PM	TEXAS INSTRUMENTS



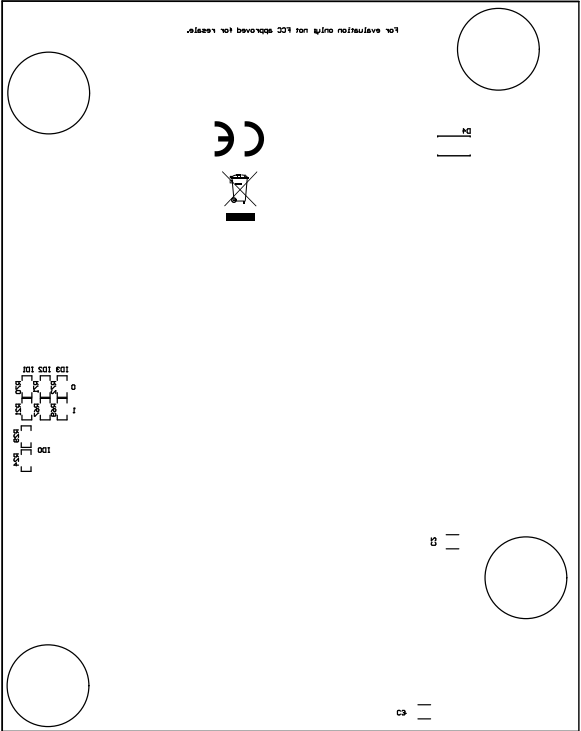
ALL NETWORK VIEWED FROM TOP SIDE	BOARD #1MOD74	REV#A	SUN REV#c31e3f6dcfc7dba0d4e978021e67394bdc0afe0 (Locally Modified)
LAYER NAME =	TID #N/A		
PLOT NAME =Signal 2	GENERATED 11/17/2023	11:46:30 PM	TEXAS INSTRUMENTS



ALL NETWORK VIEWED FROM TOP SIDE	BOARD #1	MOD4	REV	A	SUN REV	c3e36d6c7dbad6e97802e67394bdc0afe0 (Locally Modified)
LAYER NAME = Bottom Layer	TID #	N/A				
PLOT NAME = Bottom Layer	GENERATED	1	11/17/2023	11:16:30 PM	TEXAS INSTRUMENTS	



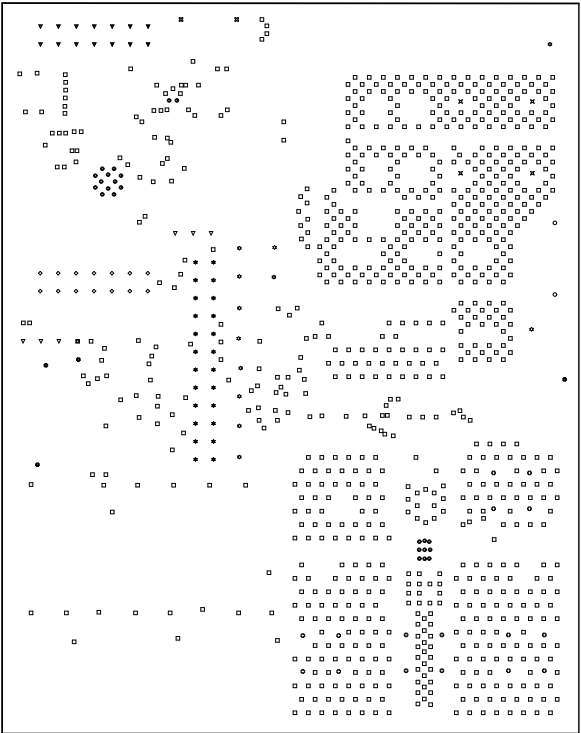
ALL NETWORK VIEWED FROM TOP SIDE	BOMED IN	MOD 1	REV	A	SUN REV	c3e3d6dc7d8a04e97802e67204bdc0af0 (Locally Modified)
LAYER NAME = Bottom Solder	TID #	N/A				
PLOT NAME = Bottom Solder Mask	GENERATED	11/17/2023	11:46:26 PM	TEXAS INSTRUMENTS		



ALL NETWORK VIEWED FROM TOP SIDE	BOMED #1	MOD1	REV	A	SUN REV	c3e3d6dc7d8a04e97802e67204bdc0afe0 (Locally Modified)
LAYER NAME = Bottom Overlay	TID #	N/A				
PLOT NAME = Bottom Overlay	GENERATED	1	11/17/2023	11:46:31 PM	TEXAS INSTRUMENTS	

Symbol	Quantity	Finished Hole Size	Plated	Hole Type	Drill Layer Pair	Hole Tolerance
⊙	23	7.87mil (0.200mm)	PTH	Round	Top Layer - Bottom Layer	+/-3.15mil
⊕	4	8.00mil (0.203mm)	PTH	Round	Top Layer - Bottom Layer	
□	870	13.78mil (0.350mm)	PTH	Round	Top Layer - Bottom Layer	
▣	1	17.72mil (0.450mm)	PTH	Round	Top Layer - Bottom Layer	
◇	14	40.00mil (1.016mm)	PTH	Round	Top Layer - Bottom Layer	
✱	24	40.16mil (1.020mm)	PTH	Round	Top Layer - Bottom Layer	
▽	6	40.16mil (1.020mm)	PTH	Round	Top Layer - Bottom Layer	
▼	14	43.31mil (1.100mm)	PTH	Round	Top Layer - Bottom Layer	+/-1.97mil
○	2	51.18mil (1.300mm)	PTH	Round	Top Layer - Bottom Layer	+3.94mil/-0.00mil
⊗	4	62.99mil (1.600mm)	PTH	Round	Top Layer - Bottom Layer	
⊕	16	62.99mil (1.600mm)	PTH	Round	Top Layer - Bottom Layer	
✱	12	63.00mil (1.600mm)	PTH	Round	Top Layer - Bottom Layer	
⊗	2	23.62mil (0.600mm)	PTH	Slot	Top Layer - Bottom Layer	
	992 Total					

Slot definitions : Routed Path Length = Calculated from tool start centre position to tool end centre position.
Hole Length = Routed Path Length + Tool Size = Slot length as defined in the PCB layout



ALL NETWORK VIEWED FROM TOP SIDE	BOARD #:	MOD4	REV:	A	SUN REV:	c3fe26dc7c7da0d487802e4c7394bdcDate0 (Locally Modified)
LAYER NAME =	Drill Drawing	TID #:	N/A			
PLOT NAME =	Drill Drawing	GENERATED :	11/17/2023	11:46:32 PM	TEXAS INSTRUMENTS	

